

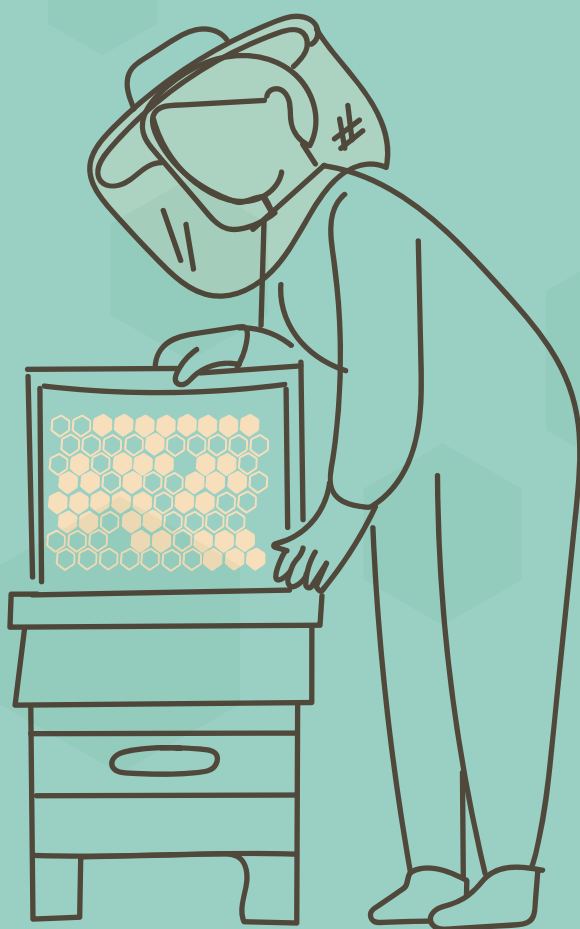
GOOD BEEKEEPING PRACTICES | Apiary Set-up and Maintenance

Setting Up the Apiary

Proper positioning of hives

The hives must always be positioned in a way that they receive prolonged exposure to direct sunlight during the day. They should be facing South-East to help the bees in starting foraging in the morning.

Moreover, the hives should not be placed directly on the ground but on stands to avoid spoiling of the beehive structure. Beehives should be placed at about 50 cm from the ground to ease the beekeeper's operations inside the hive.



step 1

Choose a location that is not too close to other buildings.



step 2

Use signs to inform people about the presence of bees.



step 3

Use proper fences to keep out animals.



step 4

Use stands so that the hives are not directly on the ground.



step 5

Provide shade if possible.



step 6

Provide protection against winds with trees.



step 7

Orient the entrance to the south-south-east to ensure warm sun in the morning.



Copyright © Proper positioning of hives
All images © Marek Flataj



Visit us
www.bthenet.eu

Contact us
info@bthenet.eu

Follow us
f @ BTHENETProject

Our Consortium

