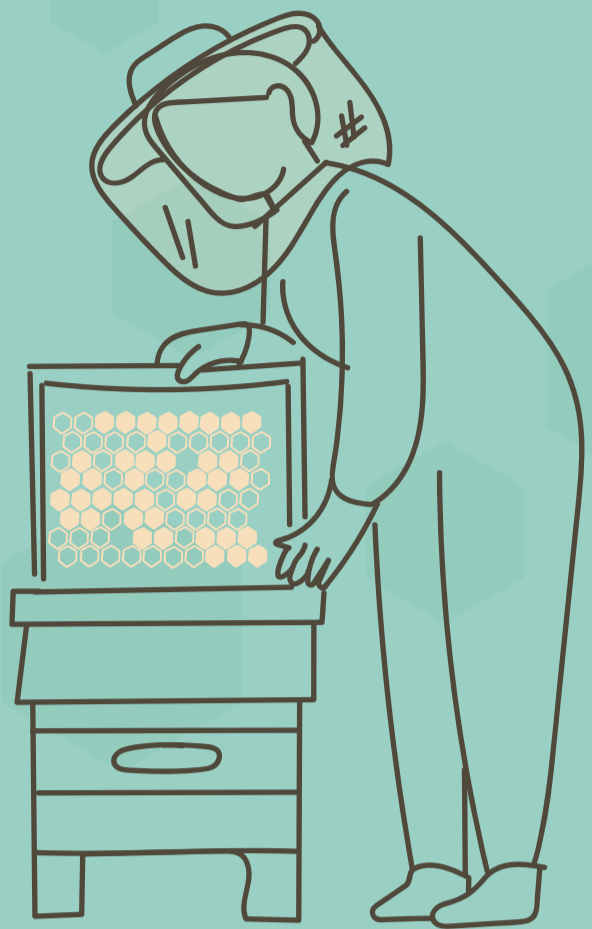


GOOD BEEKEEPING PRACTICES | Apiary Set-up and Maintenance

Find the Right Spot for Your Apiary

Ensuring presence of trees (or other barriers) to create protection against weather stressors

The site should be checked beforehand to verify the presence of trees, bushes or other natural barriers that could act as shields against the wind. Shading nets or windbreaks should be considered if there is not a natural barrier. Place the apiary away from areas with excessive winds. It is advisable to position it under deciduous trees to ensure the hives receive sunlight and warmth during the cold season.



step 1

The trees and bushes behind the apiary protect the colonies from the wind.



step 2

Natural hedge protecting the apiary from prevailing winds.



step 3

Artificial hedge protecting the apiary from prevailing winds.



step 4

Trees offer shade to the colonies during the hot season.



step 5

The shade of the trees reduces heat in the hive in the summertime.



step 6

The shade from the trees not only helps to the hives but also reduces stress for the bees during the summer.

Copyright © Ensuring presence of trees (or other barriers) to create protection against weather stressors. All Images © Gianluca Capanna, Filippo Jannotti, Sebastianini



Visit us
www.bthenet.eu

Contact us
info@bthenet.eu

Follow us
f @ BTHENETProject

Our Consortium

