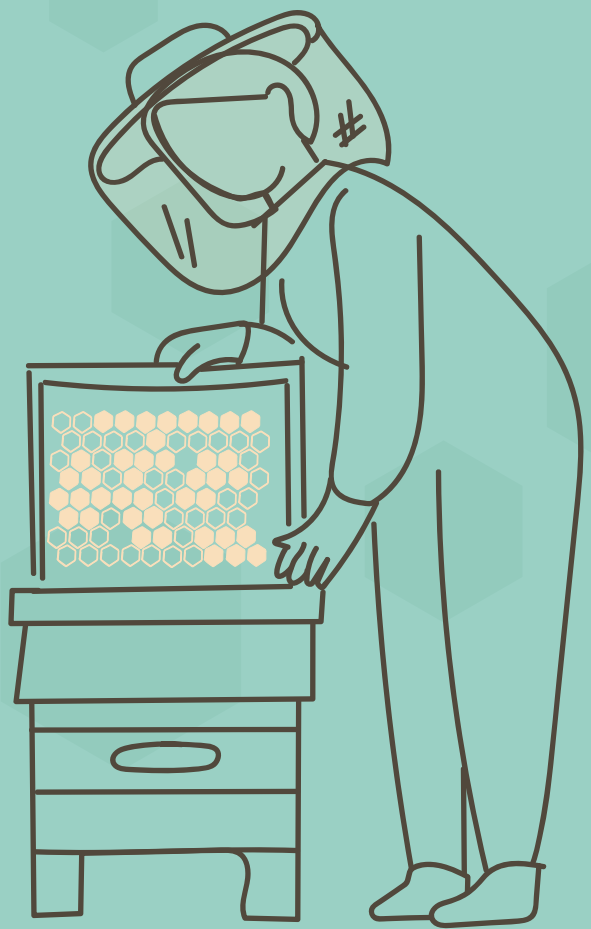


GOOD BEEKEEPING PRACTICES | Apiary Set-up and Maintenance

Find the Right Spot for Your Apiary

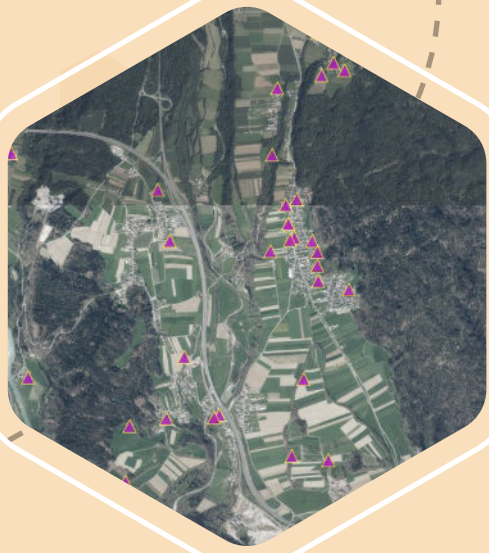
Maintaining appropriate distance from other apiaries

The distance between different apiaries is important to ensure that bees have sufficient foraging pasture and to reduce the risk of disease transmission, such as varroa or fowlbroods. Maintaining sufficient distance from other apiaries is pivotal in breeding and selection programs. Adequate distancing of apiaries also reduces the impact of managed bees on wild pollinators.



step
1

Determine the carrying capacity of the area.



step
2

Review the number of existing bee colonies in the area.



step
3

Adjust the number of new colonies according to the pasture conditions and the existing number of colonies.



step
4

Respond to local and seasonal conditions.



Copyright © Maintaining appropriate distance from other apiaries
All images © Peter Kozmus



Visit us

www.bthenet.eu

Contact us

info@bthenet.eu

Follow us

[f](#) [@](#) [X](#) [in](#) [v](#) @BTHENETProject

Our Consortium

