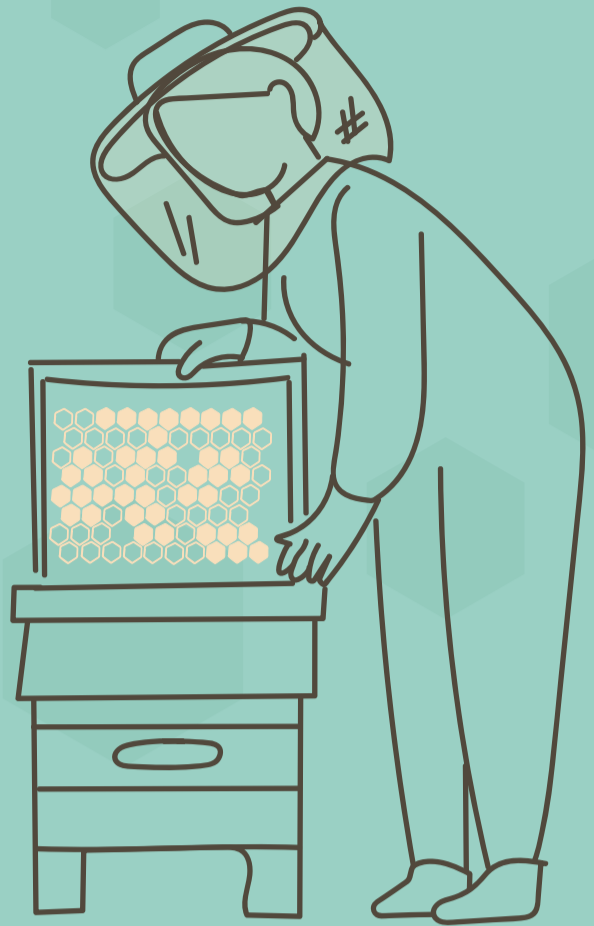


GOOD BEEKEEPING PRACTICES | Apiary Set-up and Maintenance

Find the Right Spot for Your Apiary

Having enough space for storage rooms/working tools

Make sure when you set up the apiary that you provide enough space for food-safe management practices. This means you must be able to handle the honey supers in a quality-assured way.



step 1

Choose the right spot – Find a dry, shaded area close to your apiary where you can safely store your tools and equipment. Ensure the spot is easy to access during inspections and honey harvesting.



step 2

Plan the space – Consider what you need to store: beekeeping suits, smokers, hive tools, frames, and honey extraction equipment. Add shelves or bins to keep everything neat and easy to find.



step 3

Protect your supplies – Keep storage areas clean and safe from pests. Use sealable containers for smaller items and ensure proper ventilation to prevent mould or damage to your tools and frames.



step 4

Label and organise – Label shelves or bins so you can quickly grab what you need. Group tools by task (for example, inspection gear, honey harvesting supplies) for easy access during busy seasons.



step 5

Make room for growth – Leave space for future equipment or expanding your apiary. A little extra room now will save you from clutter as your beekeeping operation grows.



Copyright © Having enough space for storage rooms/working tools
All images © Johanna Klára Kóczán, University of Veterinary Medicine Budapest



Visit us
www.bthenet.eu

Contact us
info@bthenet.eu

Follow us
f @ BTHENETProject

Our Consortium

