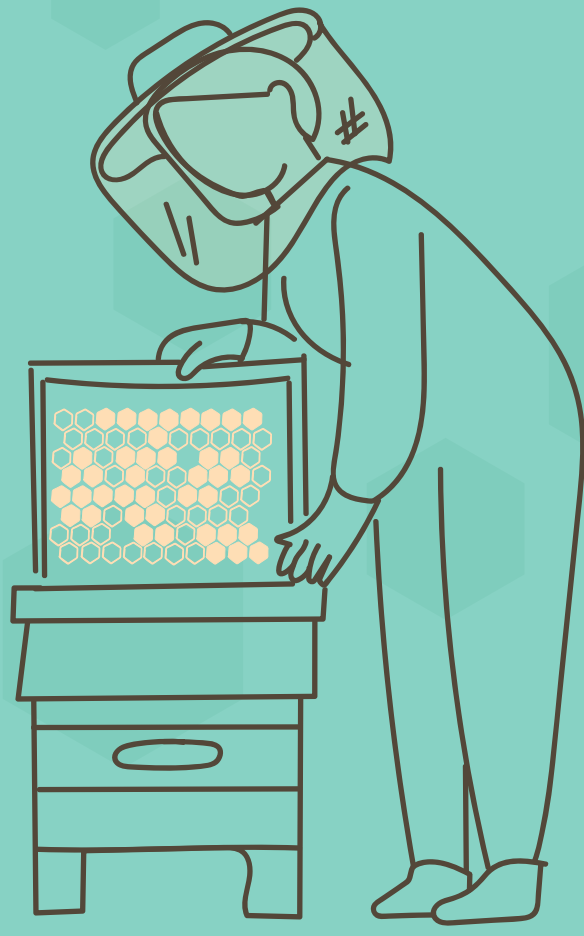


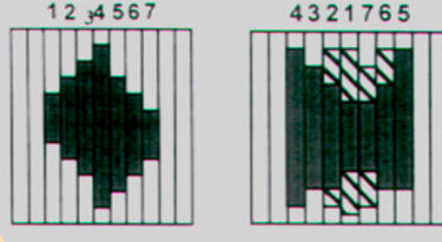
## Evaluate the space needed by the growing colony

A strong honey bee colony can handle if the space is larger than it needs at the given time. However, a weak colony will not develop and grow in size if the space given is too big. If this is the case, some diseases might thrive in this environment and even weaken the colony further. Always evaluate the optimal space needed by the bees to allow healthy colonies.



### step 1

During colony inspection, one of the main tasks is to evaluate the space of the colony for brood expansion and food storage.



### step 2

You can give space to the queen by rotating the brood frames.



### step 3

You may also wish to uncap the honey on the top of the brood frames.



### step 4

You may add drownout combs or even wax foundation.

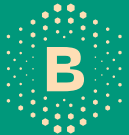


### step 5

If needed, add extra supers for honey production.



© Evaluate the space needed by the growing colony  
All images © iFICO



Visit us  
[www.bthenet.eu](http://www.bthenet.eu)

Contact us  
[info@bthenet.eu](mailto:info@bthenet.eu)

Follow us  
f @ BTHENETProject

#### Our Consortium

